



CEM Demo Installation Procedures



CEM Demo Installation Procedures

- These instructions cover installation on various Windows operating systems.
- The steps shown were performed using Windows 8.
- For Windows operating systems other than Windows 8, the screens may look slightly different, but the basic steps are the same.



CEM Demo Installation Procedures

Step 1

- **Navigate to the following link.**

(This link also provided in your CEM Demo request confirmation email)

http://www.veritechinc.com/wp-content/uploads/2016/03/CEM_Demo.exe

- The link will automatically download the file “CEM_Demo.exe” to your Downloads folder.



CEM Demo Installation Procedures

Step 2

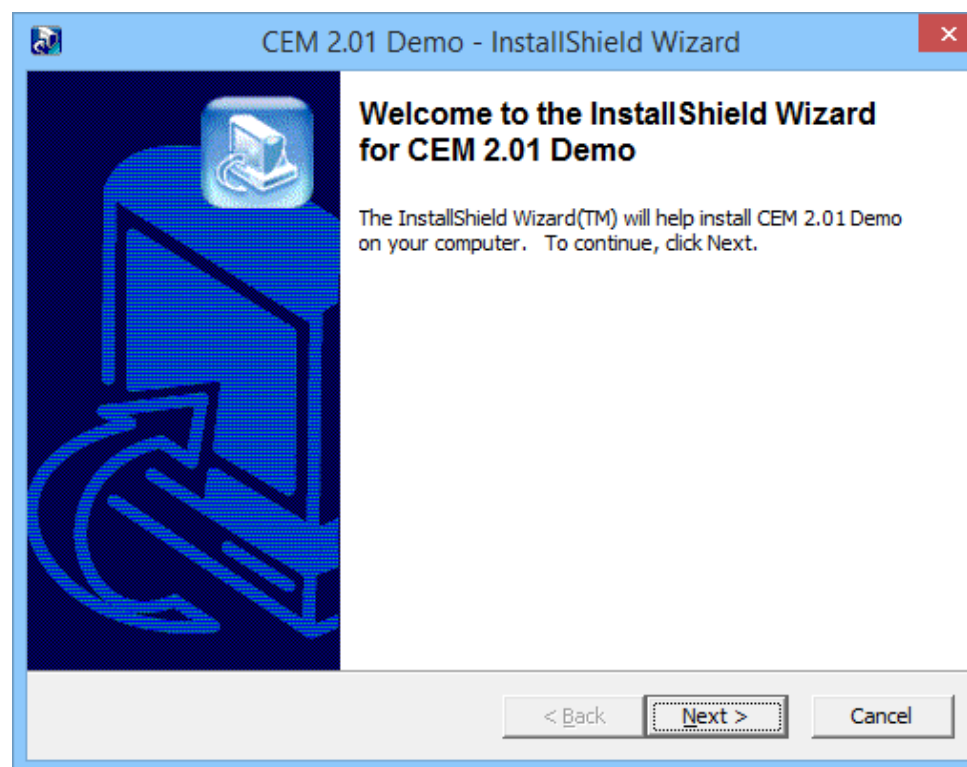
- Open your Downloads folder, and launch the “CEM_Demo.exe” file.



CEM Demo Installation Procedures

Step 3

Review info and click “Next” when ready.

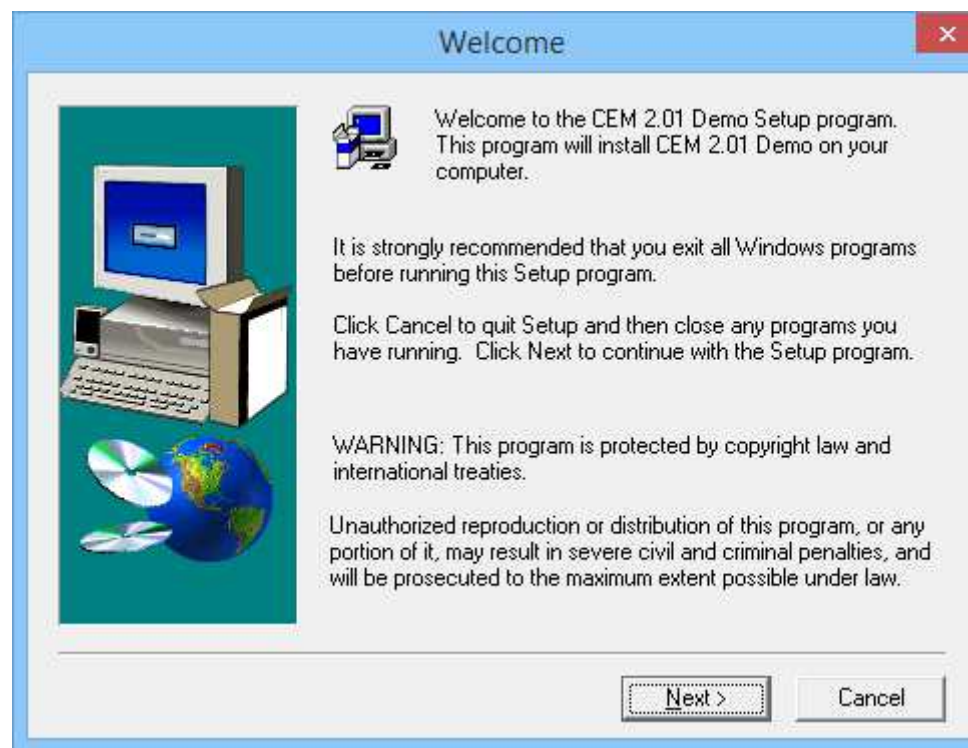




CEM Demo Installation Procedures

Step 4

Review info and click “Next” when ready.

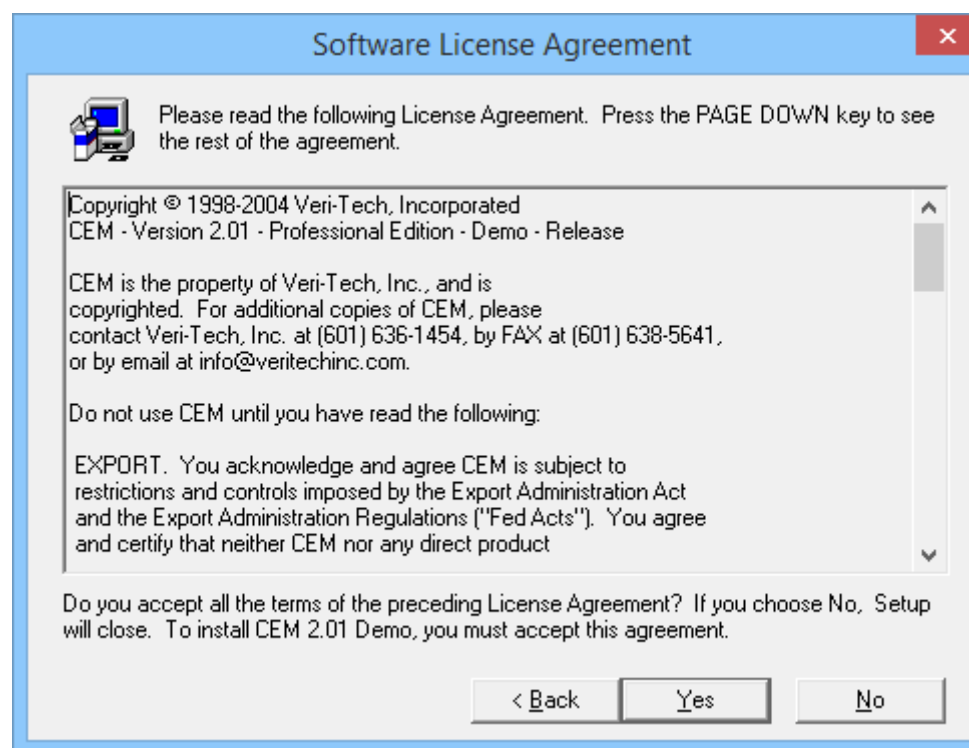




CEM Demo Installation Procedures

Step 5

Review info and click “Yes”
when ready.

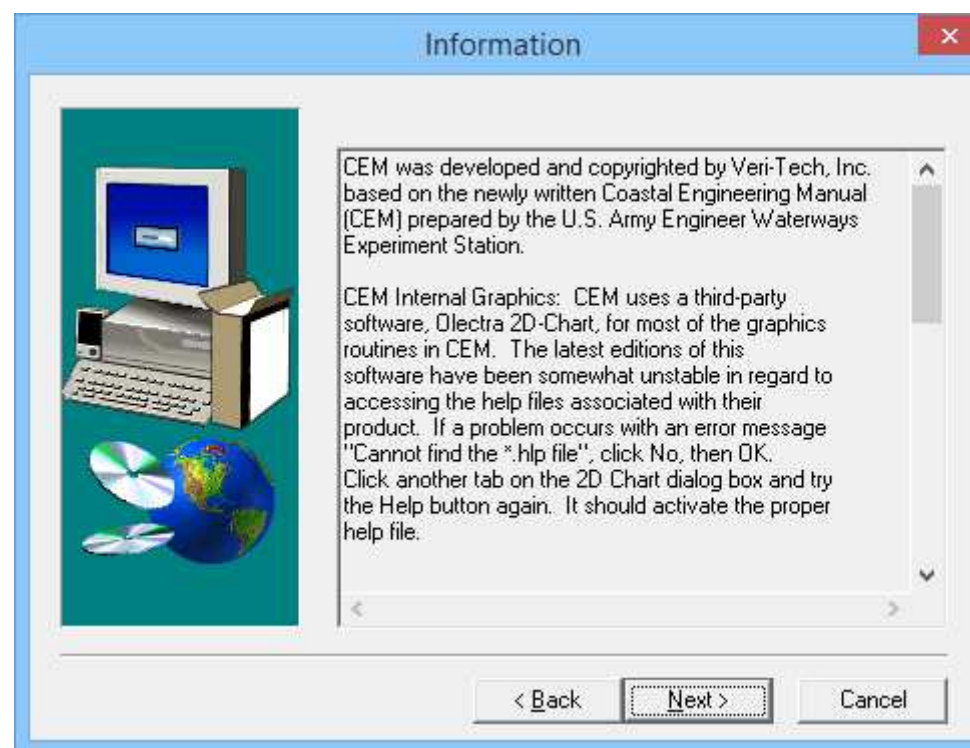




CEM Demo Installation Procedures

Step 6

Review info and click “Next” when ready.





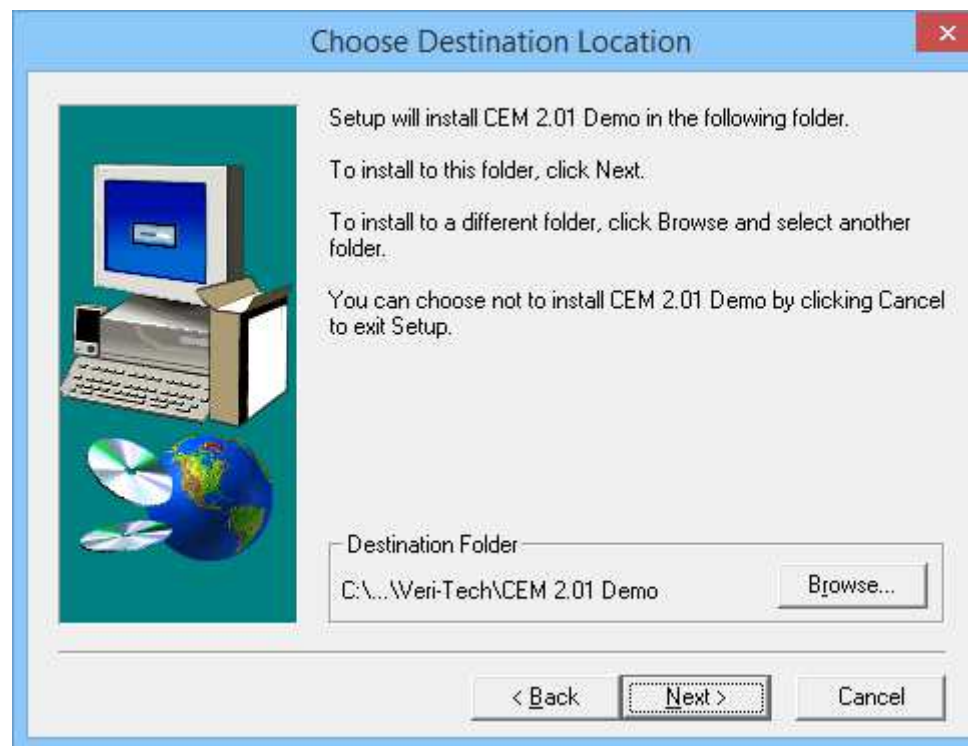
CEM Demo Installation Procedures

Step 7

The Installation Wizard creates a Default Destination Folder.

Even though an alternate Destination Folder can be created, it is recommended that the default location be used.

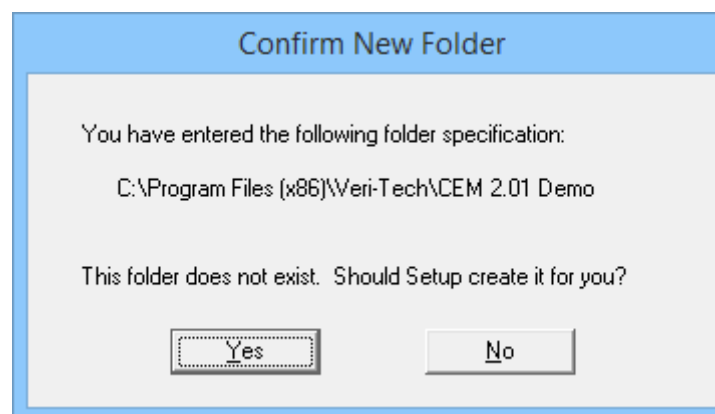
Click “Next” when ready.





CEM Demo Installation Procedures

Step 8

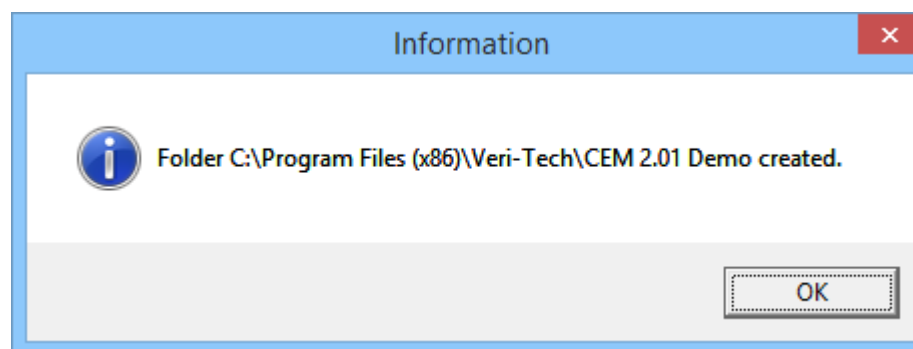


Review info and click “Yes”
when ready.



CEM Demo Installation Procedures

Step 9



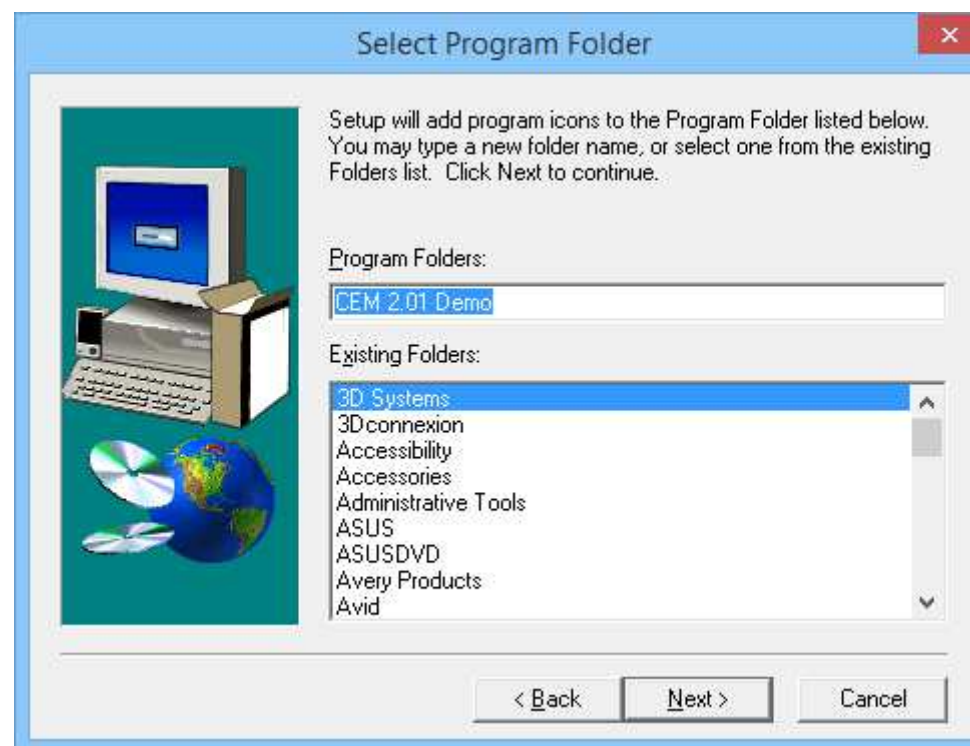
Review info and click “OK”
when ready.



CEM Demo Installation Procedures

Step 10

Review info and click “Next” when ready.

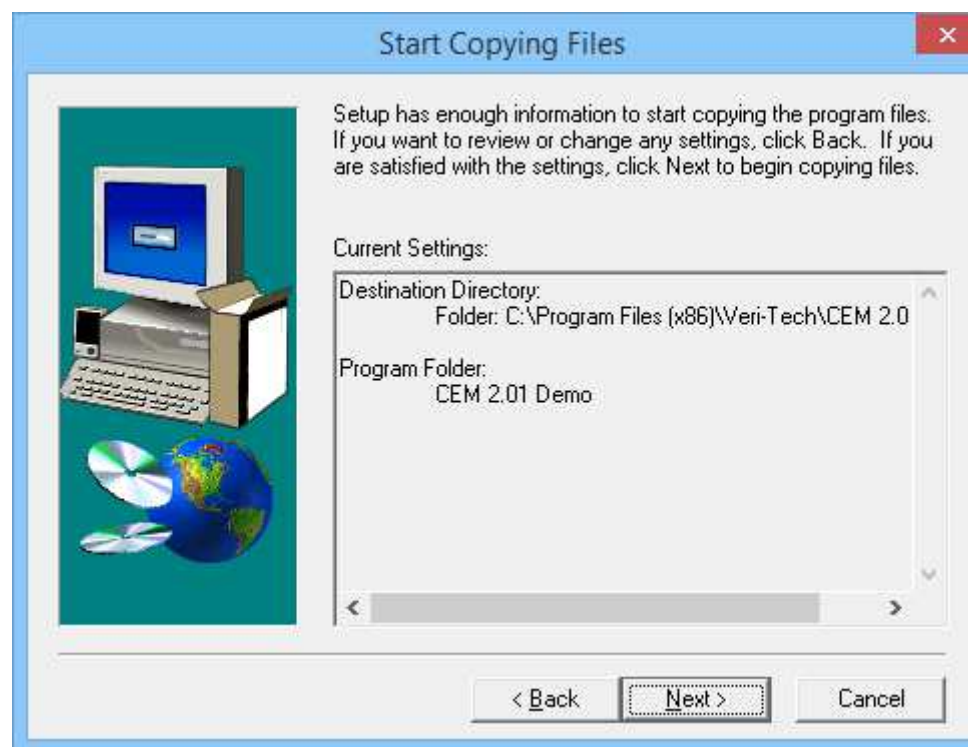




CEM Demo Installation Procedures

Step 11

Review info and click “Next” when ready.

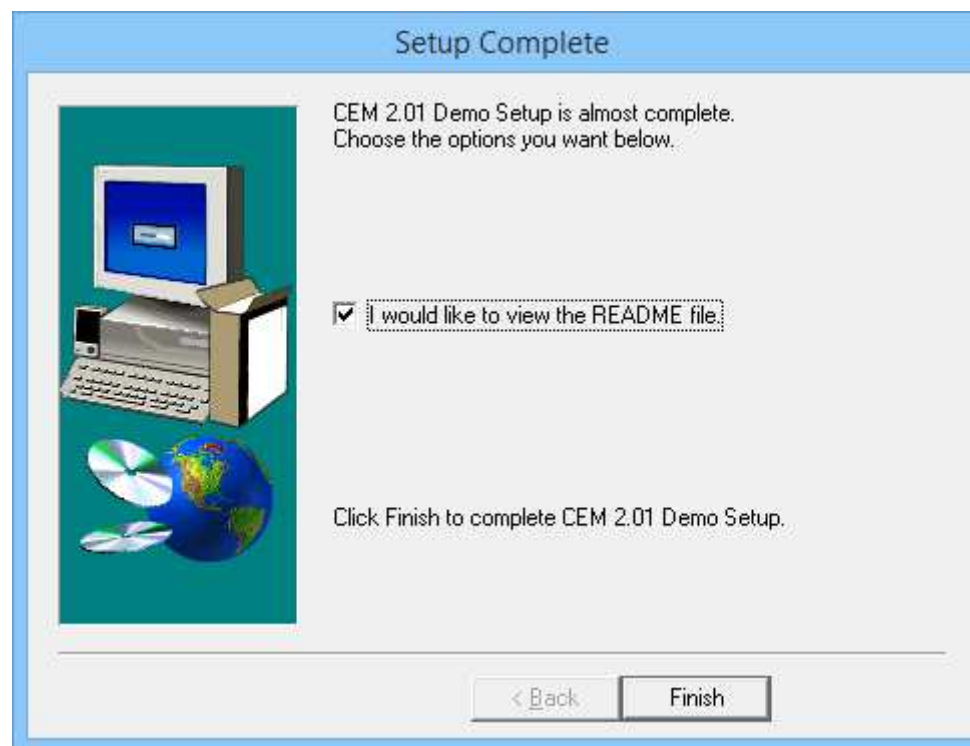




CEM Demo Installation Procedures

Step 12

Review info and click “Finish” when ready.





CEM Demo Installation Procedures

Step 13

CEM 2.01 Demo program is now installed, and a Short Cut created on your Desktop.



Launch CEM 2.01 Demo from the Shortcut



CEM Demo Installation Procedures

Step 14

CEM 2.01 Demo installation is now complete.

The Coastal Engineering Manual (CEM) is the modern replacement of the Shore Protection Manual (SPM), the basis for coastal engineering practices in the U.S. Army Corps of Engineers and most standard engineering projects throughout the world. It incorporates contributions from worldwide experts/practitioners and latest research techniques, procedures, and information. The CEM was prepared by the U.S. Army Engineer Research and Development Center. During the course of preparation of the CEM, the document received extensive review within the U.S. Government and worldwide industry / academic experts. As part of its Cooperative Research and Development Agreement to create an interactive version, Veri-Tech, Inc. also provided detailed review. It will replace the SPM as well as several Engineering Manuals dealing with coastal project design.

CEM 2.01 Professional Edition is the personal computer version of the CEM and is a fully interactive, multi-media resource, containing programmed formulas, live/interactive graphs, and animated visuals. **CEM 2.01 PE** is a Windows 95-, 98-, NT-, 2000- or XP- based CD-ROM interactive document that incorporates all the tools and procedures used to plan, design, construct, and maintain coastal projects.

DEMO Version

This demonstration version has all the attributes of **CEM 2.01 PE**, except most of the pages in the manual are made inactive. The symbol ➔ indicates an active page. You should be able to navigate / search the manual, save notes, change fonts / colors, and run equations and example problems that are contained in the active pages. The **Content Tab** contains a listing of all chapters and sections of the entire CEM. The active pages in this DEMO are as follows:

- CEM Introduction
- How to Use the CEM
- Part I - all
- Part II - Chapter 7 - sections 1, 2, 3, 8 - 10
- Part III - Chapter 2 - sections 2-3, 2-3a, 2-3b, 5, 6, 7
- Part IV - Chapter 2 - sections 1 through 4, 14, 15
- Part V - Chapter 3 - sections 3-1, 3-2, 3-7 - 3-9
- Part VI - Chapter 5 - sections 5-2-b, 5-2-b-1, 5-2-b-2, 5-5 through 5-5-b-12, 9 - 11
- Glossary

Releases

Because the CEM was written over an extended period of time, Veri-Tech developed and released the electronic version of the manual in 2 stages.

CEM Version 1.01 included:

- **Part I - Introduction to the CEM.** This Part contains information on the diversity of coastal regions, a history of coastal engineering, and general background on the development of the CEM.
- **Part II on Coastal Hydrodynamics.** This Part contains 8 chapters on water wave mechanics, meteorology and wave climate, estimation of nearshore waves, surf zone hydrodynamics, water levels and long waves, hydrodynamics of tidal inlets, harbor hydrodynamics, and hydrodynamic analysis and design conditions.