



---

# Sentinel Key Driver Installation Instructions (For USB Hardware Key)



## Sentinel Key Driver Installation Instructions

(For Hardware Key)

---

- These instructions cover installation on various Windows operating systems.
- The steps shown were performed using Windows 8.
- For Windows operating systems other than Windows 8, the screens may look slightly different, but the basic steps are the same.



# Sentinel Key Driver Installation Instructions

(For Hardware Key)

## Step 1

Locate the folder on your computer where the original installation package files were saved (CEDAS, CEM PE or CEM SE).

<input type="checkbox"/> Name	Date	Type	Size	Tags
AVIEW	9/14/2016 2:02 PM	File folder		
CEDAS_CD_Folders	9/14/2016 2:02 PM	File folder		
CEDAS_CEM_Tutorial	9/14/2016 2:02 PM	File folder		
CEDASInstall	9/14/2016 2:02 PM	File folder		
CEDASMANUALS	9/14/2016 2:02 PM	File folder		
GEN_Texamples	9/14/2016 2:02 PM	File folder		
GENESISreference	9/14/2016 2:02 PM	File folder		
NEMOS Tutorial	9/14/2016 2:02 PM	File folder		
NETCDF	9/14/2016 2:02 PM	File folder		
NMLONG	9/14/2016 2:02 PM	File folder		
Reliable	9/14/2016 2:02 PM	File folder		
RMAP_Documents	9/14/2016 2:02 PM	File folder		
SBEACH	9/14/2016 2:02 PM	File folder		
SentinelUtilityInstall	9/14/2016 2:02 PM	File folder		
STWAVE	9/14/2016 2:02 PM	File folder		
AUTORUN.INF	7/7/2003 9:17 AM	Setup Information	1 KB	
Cedas.ico	7/7/2003 9:17 AM	ICO File	3 KB	
setup.exe	5/24/2004 3:04 PM	Application	847 KB	



# Sentinel Key Driver Installation Instructions

(For Hardware Key)

---

## Step 2

Ensure that your supplied USB Hardware Key (dongle) is **NOT** installed in your computer at this point.



## Sentinel Key Driver Installation Instructions

(For Hardware Key)

---

### Step 3

#### For Windows XP, VISTA, 7, 8 and 10 Operating Systems only

- Download the latest Sentinel Key Driver (currently v7.6.8) from the following link:

[https://supportportal.gemalto.com/csm/?id=kb\\_article&sys\\_id=eb25edfd37890b80cc47261953990e60](https://supportportal.gemalto.com/csm/?id=kb_article&sys_id=eb25edfd37890b80cc47261953990e60)

- This link will be provided with your installation package.
- 

#### For other legacy Windows Operating Systems

- Download the Sentinel Key Driver version 7.6.0 from the following link:

[https://supportportal.gemalto.com/csm/?id=kb\\_article&sys\\_id=e88691ba37edcb08cc47261953990e80](https://supportportal.gemalto.com/csm/?id=kb_article&sys_id=e88691ba37edcb08cc47261953990e80)



# Sentinel Key Driver Installation Instructions

(For Hardware Key)

## Step 4

(Steps 4 – 12 are shown for installation of version 7.6.8. For Version 7.6.0 the screens may look slightly different, but the basic steps are the same)

Download and Extract the Driver files. Make sure to allow pop-ups in your browser.

The screenshot shows a Gemalto article page for 'Sentinel Protection Installer 7.6.8 for Windows'. The page includes the Gemalto logo, article title, ID (KB0016363), and 'Article Details' section with 145 views and a date of 2017-09-07. It lists components: Sentinel System Driver 7.5.9, Sentinel Security Runtime 1.0.1, Sentinel Protection Server 7.6.4.0, and Sentinel Keys Server 1.3.5.0. It also lists supported platforms from Windows XP to Windows Server 2012. A note mentions that Windows 10 Professional with 'Device Guard' is not supported. A link at the bottom says 'Click here to download file (browser pop-ups must be allowed): [DOW0002231](#)'. An arrow from the text 'Make sure to allow pop-ups in your browser.' points to this link.



# Sentinel Key Driver Installation Instructions

(For Hardware Key)

## Step 5

Recommended to extract these files to a newly created folder, located with the other CEDAS installation files.

Name	Date	Type	Size	Tags
AVIEW	9/14/2016 2:02 PM	File folder		
CEDAS_CD_Folders	9/14/2016 2:02 PM	File folder		
CEDAS_CEM_Tutorial	9/14/2016 2:02 PM	File folder		
CEDASInstall	9/14/2016 2:02 PM	File folder		
CEDASMANUALS	9/14/2016 2:02 PM	File folder		
GEN_Examples	9/14/2016 2:02 PM	File folder		
GENESISreference	9/14/2016 2:02 PM	File folder		
NEMOS Tutorial	9/14/2016 2:02 PM	File folder		
NETCDF	9/14/2016 2:02 PM	File folder		
NMLONG	9/14/2016 2:02 PM	File folder		
Reliable	9/14/2016 2:02 PM	File folder		
RMAP_Documents	9/14/2016 2:02 PM	File folder		
SBEACH	9/14/2016 2:02 PM	File folder		
Sentinel Key Driver	9/16/2016 8:42 AM	File folder		
SentinelUtilityInstall	9/14/2016 2:02 PM	File folder		
STWAVE	9/14/2016 2:02 PM	File folder		
AUTORUN.INF	7/7/2003 9:17 AM	Setup Information	1 KB	
Cedas.ico	7/7/2003 9:17 AM	ICO File	3 KB	
setup.exe	5/24/2004 3:04 PM	Application	847 KB	

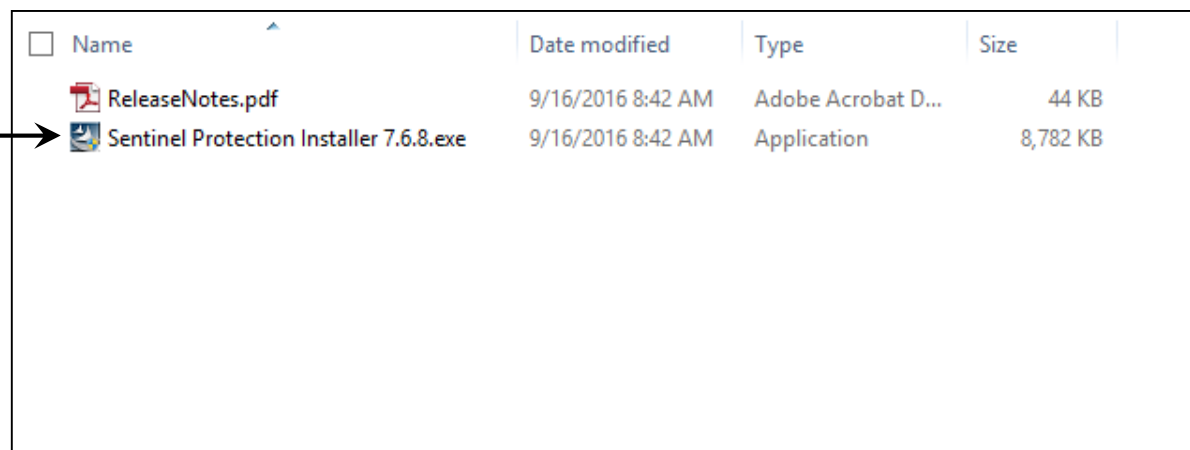




# Sentinel Key Driver Installation Instructions

(For Hardware Key)

## Step 6

Launch the  
Sentinel Key  
Installation  
Wizard



<input type="checkbox"/> Name	Date modified	Type	Size
 ReleaseNotes.pdf	9/16/2016 8:42 AM	Adobe Acrobat D...	44 KB
 Sentinel Protection Installer 7.6.8.exe	9/16/2016 8:42 AM	Application	8,782 KB





# Sentinel Key Driver Installation Instructions

(For Hardware Key)

## Step 7

Review info and click “Next” when ready.





# Sentinel Key Driver Installation Instructions

(For Hardware Key)

## Step 8

Review info and click “Next” when ready.



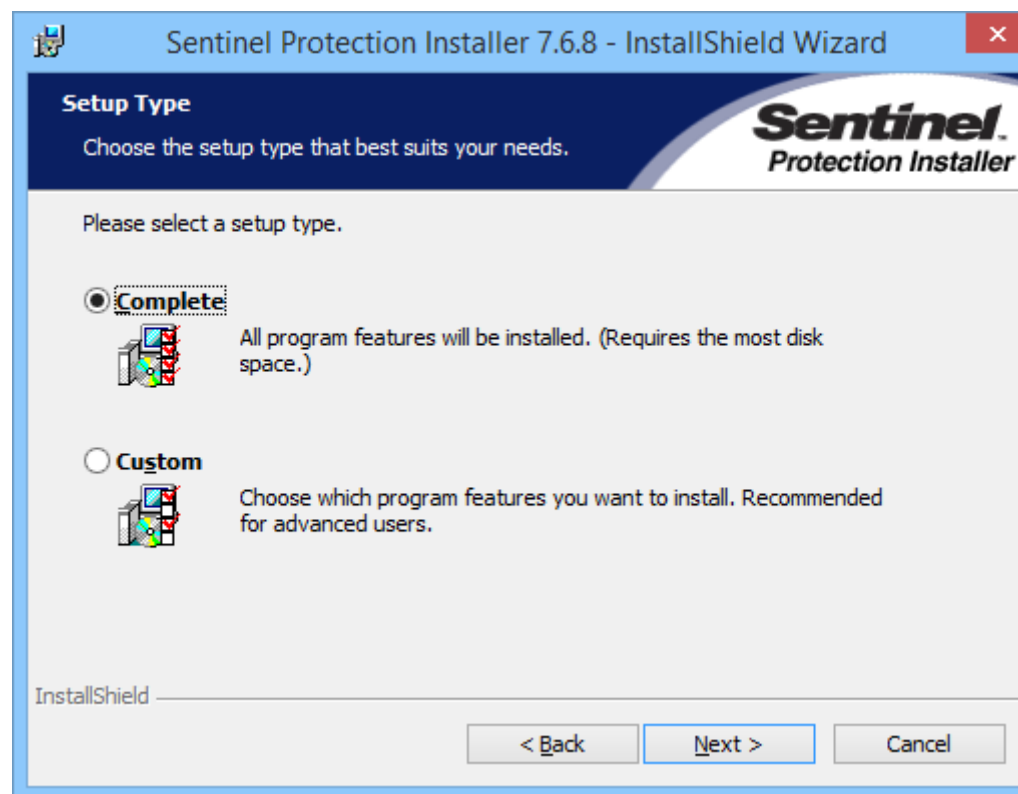


# Sentinel Key Driver Installation Instructions

(For Hardware Key)

## Step 9

Review info and click “Next” when ready.

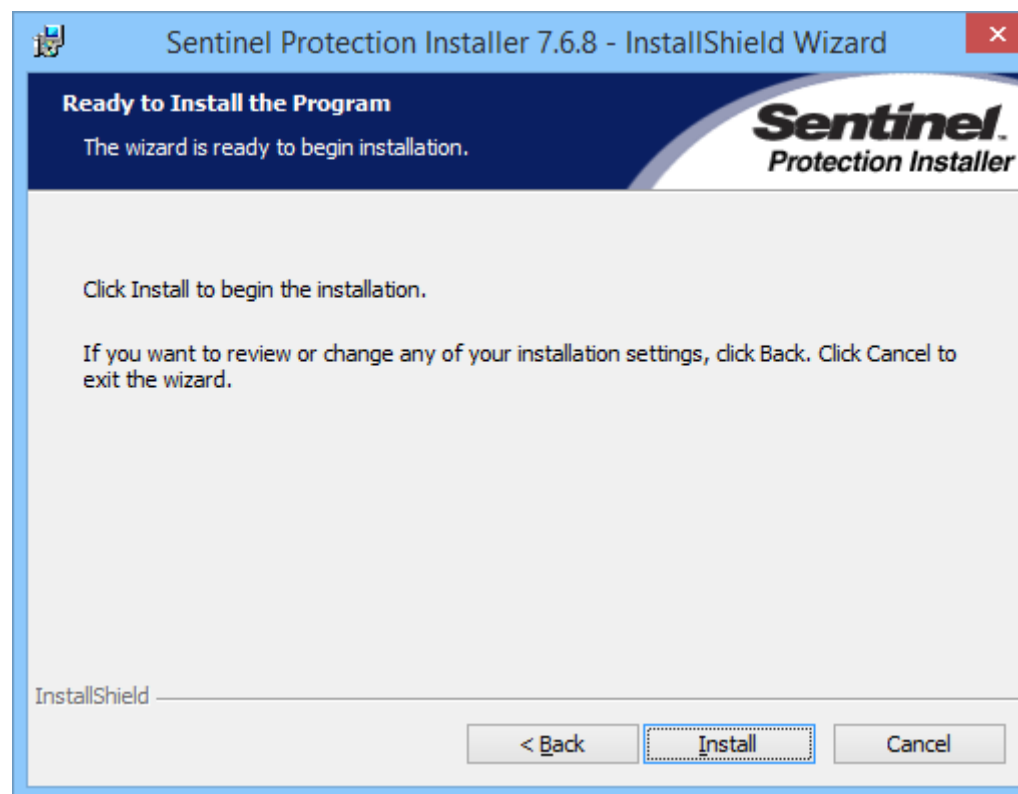




# Sentinel Key Driver Installation Instructions (For Hardware Key)

## Step 10

Review info and click “Install”  
when ready.



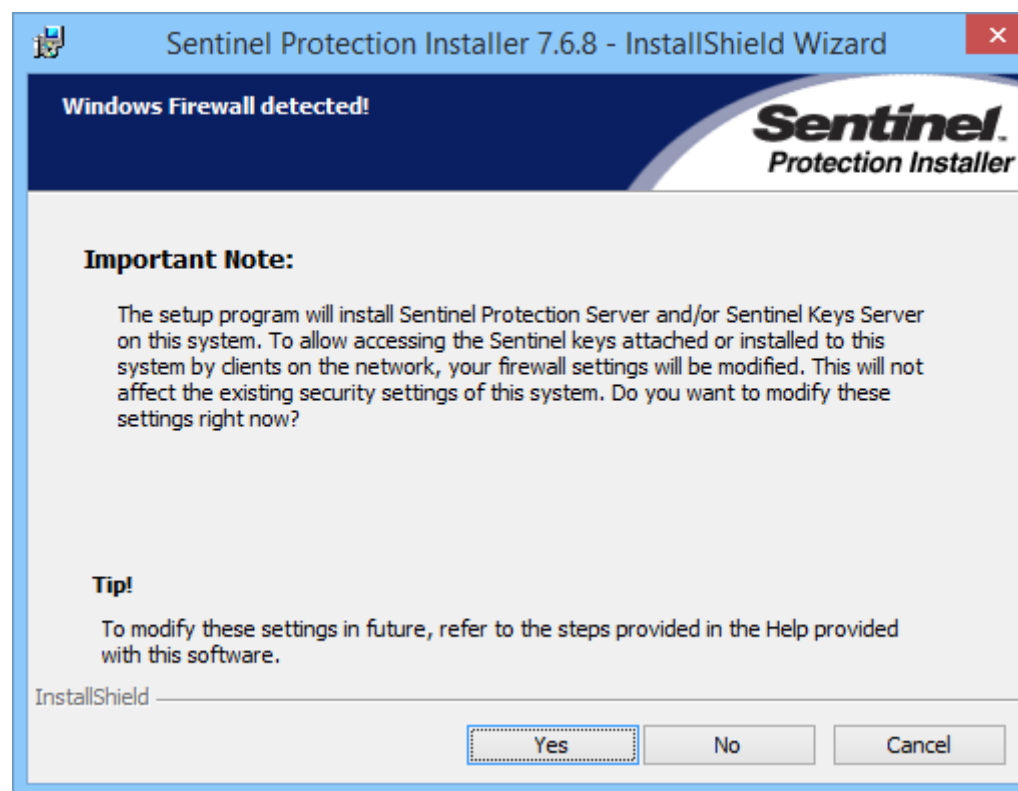


# Sentinel Key Driver Installation Instructions

(For Hardware Key)

## Step 11

Review info and click “Yes” when ready.



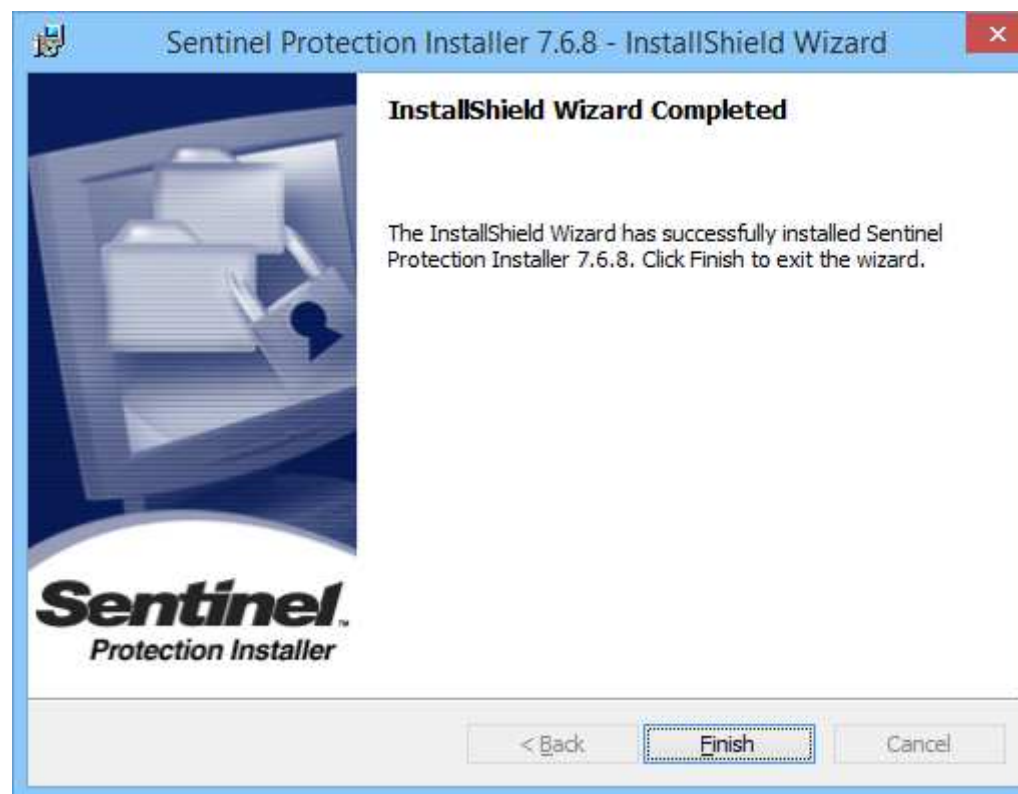


# Sentinel Key Driver Installation Instructions

(For Hardware Key)

## Step 12

Review info and click “Finish” when ready.





## Sentinel Key Driver Installation Instructions

(For Hardware Key)

---

### **Step 13**

At this point, you can install the supplied USB Hardware Key into your computer.



# Sentinel Key Driver Installation Instructions

(For Hardware Key)

## Step 14

In the original installation package folder, start the “setup.exe” application file.

Name	Date	Type	Size	Tags
AVIEW	9/14/2016 2:02 PM	File folder		
CEDAS_CD_Folders	9/14/2016 2:02 PM	File folder		
CEDAS_CEM_Tutorial	9/14/2016 2:02 PM	File folder		
CEDASInstall	9/14/2016 2:02 PM	File folder		
CEDASMANUALS	9/14/2016 2:02 PM	File folder		
GEN_Examples	9/14/2016 2:02 PM	File folder		
GENESISreference	9/14/2016 2:02 PM	File folder		
NEMOS Tutorial	9/14/2016 2:02 PM	File folder		
NETCDF	9/14/2016 2:02 PM	File folder		
NMLONG	9/14/2016 2:02 PM	File folder		
Reliable	9/14/2016 2:02 PM	File folder		
RMAP_Documents	9/14/2016 2:02 PM	File folder		
SBEACH	9/14/2016 2:02 PM	File folder		
Sentinel Key Driver	9/16/2016 8:42 AM	File folder		
SentinelUtilityInstall	9/14/2016 2:02 PM	File folder		
STWAVE	9/14/2016 2:02 PM	File folder		
AUTORUN.INF	7/7/2003 9:17 AM	Setup Information	1 KB	
Cedas.ico	7/7/2003 9:17 AM	ICO File	3 KB	
setup.exe	5/24/2004 3:04 PM	Application	847 KB	





# Sentinel Key Driver Installation Instructions (For Hardware Key)

## Step 15

Click the “Run the Network Monitoring Tool” button.

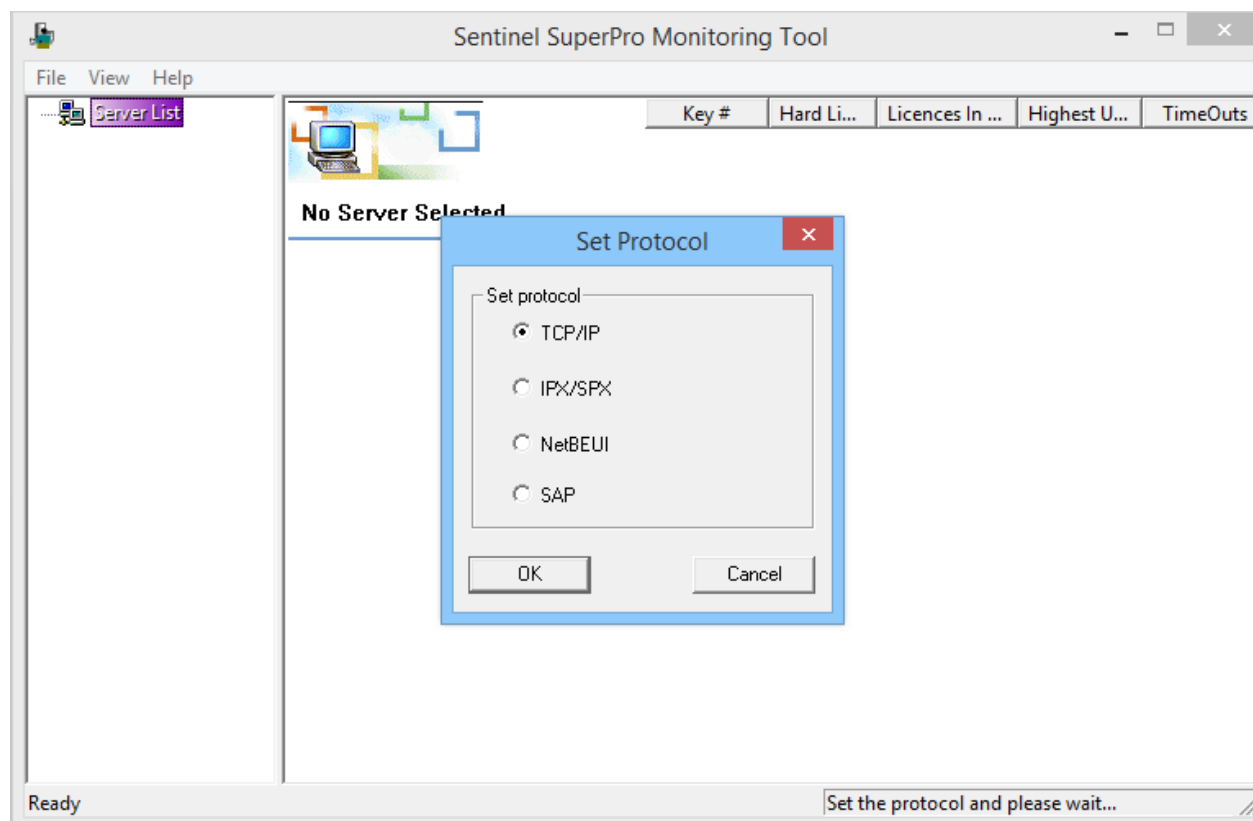




# Sentinel Key Driver Installation Instructions (For Hardware Key)

## Step 16

Make sure the “TCP/IP” radio button is selected, and click the “OK” button.



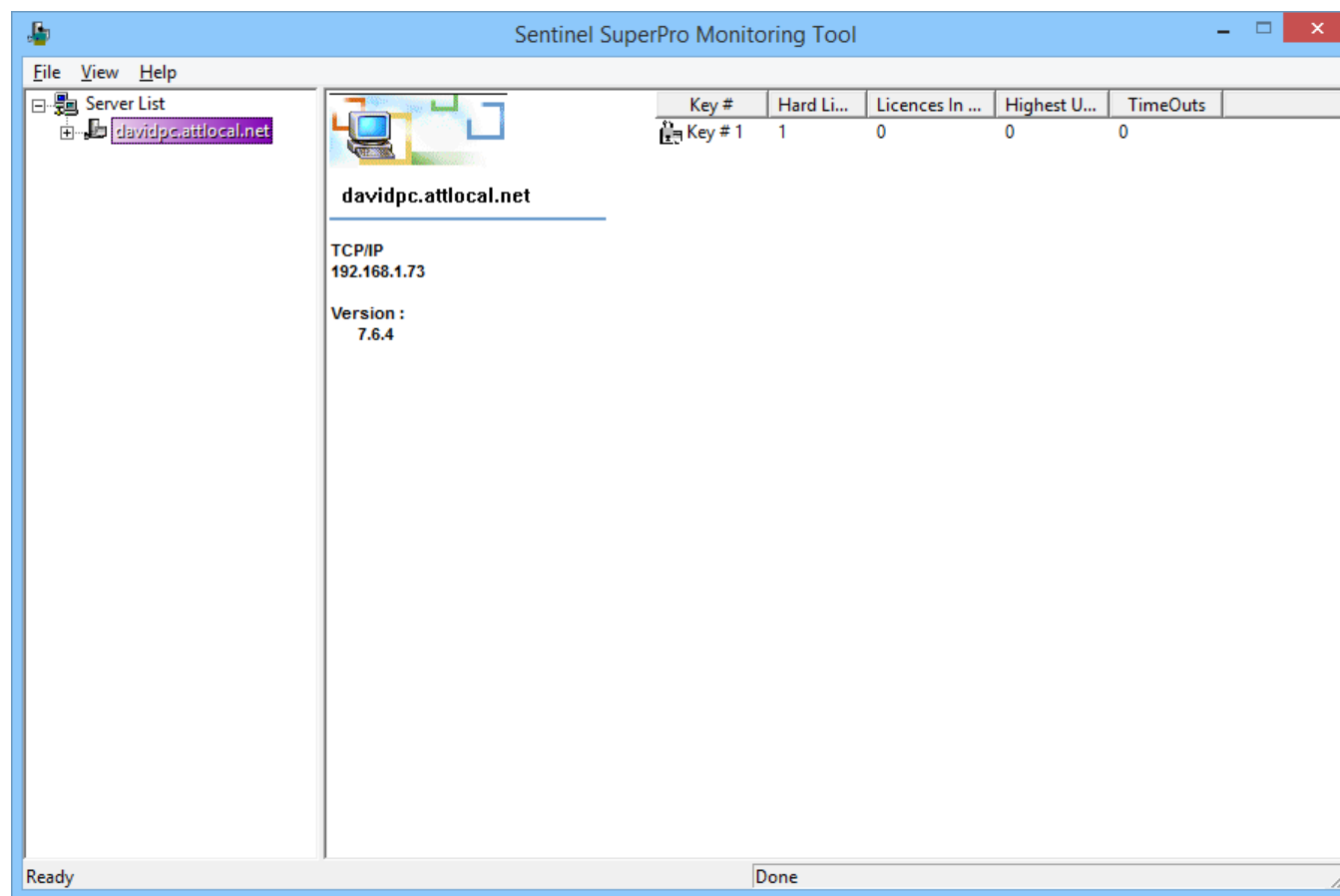


# Sentinel Key Driver Installation Instructions

(For Hardware Key)

## Step 17

The Monitoring Tool verifies that the USB Hardware Key and Driver are correctly installed.









# Sentinel Key Driver Installation Instructions

(For Hardware Key)

## Step 18

Launch CEDAS from  
the previously installed  
Program Folder. →

<input type="checkbox"/> Name	Date modified	Type	Size
 CEDAS	9/16/2016 8:20 AM	Shortcut	2 KB
 Graphics Help (2D)	9/16/2016 8:20 AM	Shortcut	1 KB
 Graphics Help (3D)	9/16/2016 8:20 AM	Shortcut	1 KB
 Read Me	9/16/2016 8:20 AM	Shortcut	2 KB



# Sentinel Key Driver Installation Instructions

(For Hardware Key)

## Step 19

CEDAS installation is now complete.

